

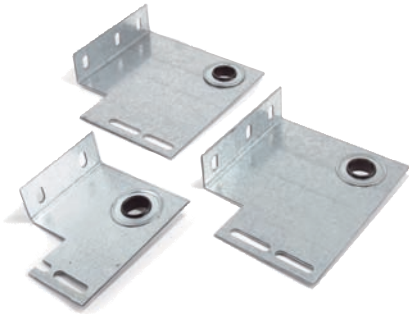
SPREADER ARM PLATES



PART NO. / DESCRIPTION	1-29	30-59	60-119	120+
HB208-14-H 14 1/2" x 3 1/2" Spreader Arm Plate (with bearing)	Call	Call	Call	Call

FLANGED END BEARING PLATES

PART NO. / DESCRIPTION	1-4	5-9	10-19	20+
HB101-00-H 3 3/8" Flanged end bearing plate (with bearing)	Call	Call	Call	Call
HB102-00-H 5" Flanged end bearing plate (with bearing)	Call	Call	Call	Call
HB103-00-H 6" Flanged end bearing plate (with bearing)	Call	Call	Call	Call



CENTER BEARING SUPPORT PLATES



PART NO. / DESCRIPTION	1-4	5-9	10-19	20+
HB338-8G-H 5 1/2" x 3 3/8", 8 GA, w/ 1" Center bearing	Call	Call	Call	Call
HB438-8G-H 5 1/2" x 4 3/8", 8 GA, w/ 1" Freeway bearing	Call	Call	Call	Call
HB500-8G-H 5 1/2" x 5", 8 GA, w/ 1" Freeway bearing	Call	Call	Call	Call
HB600-8G-H 5 1/2" x 6", 8 GA w/ 1" Freeway bearing	Call	Call	Call	Call
HB718-8G-H 5 1/2" x 7 1/8", 8 GA, w/ 1" Freeway bearing	Call	Call	Call	Call

UNIVERSAL SPRING ANCHOR BRACKETS



PART NO. / DESCRIPTION	1-4	5-9	10-19	20+
HB302-00-H Mini Resi-USA spring anchor (12ga)	Call	Call	Call	Call
HB301-LH-H Universal-USA spring anchor Left hand (11ga)	Call	Call	Call	Call
HB301-RH-H Universal-USA spring anchor Right hand (11ga)	Call	Call	Call	Call