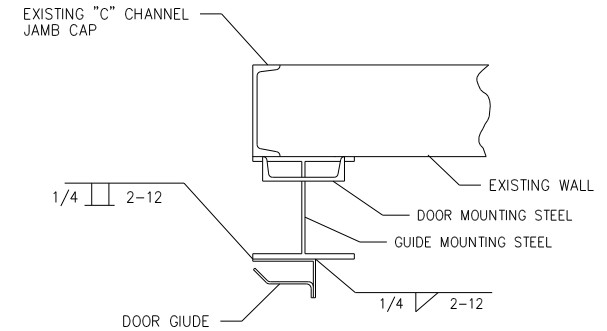
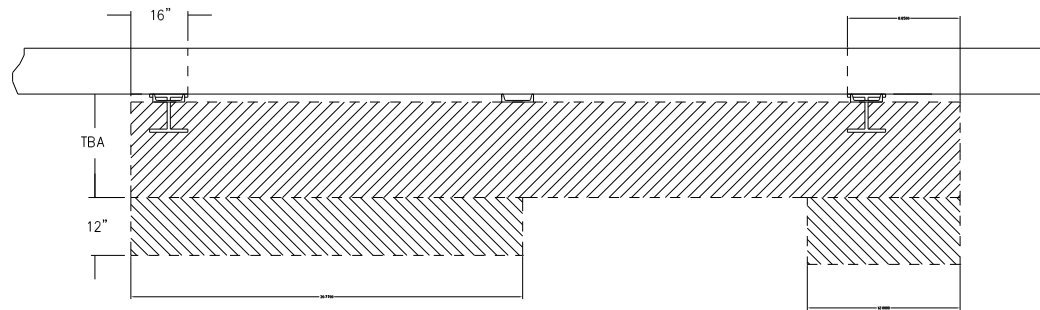
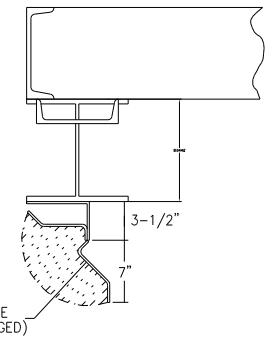


ALL DIMENSIONS SHOWN ARE FOR ACTUAL DOOR COMPONENTS. SEE FRAMING DETAIL FOR INSTALLATION CLEARANCES.

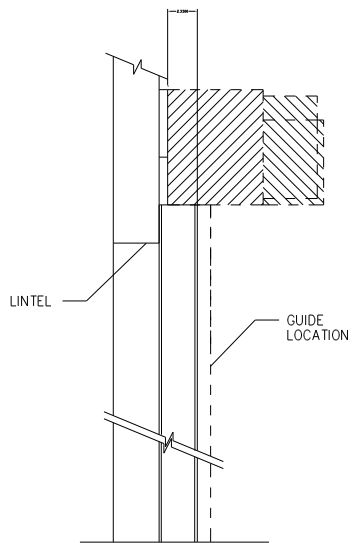
M & I DOOR SYSTEMS LTD.			TITLE		
DOOR OPTIONS			SHOP DRAWING		
<input type="checkbox"/> WINDOWS, No. REQ'D _____	<input type="checkbox"/> PULLCORDS	DOOR SPEED: _____ 9 _____ IPS OPERATOR TYPE: _____ 3 _____ HP, FDGH/ECH _____ VOLTS _____ PHASE _____ CYCLES _____ AMP DRAW	DOOR TYPE	LARGE RE-COIL-AWAY R.H.	
<input type="checkbox"/> RUBBER LOOP - 7"	<input type="checkbox"/> LOOP DETECTOR		FEATURES:	DOOR MNTD., TANDEM O.B.C.B.S. AND OPER, WALL MNTD. IDLER	
<input type="checkbox"/> GALV. OPERATOR HOOD	<input type="checkbox"/> MOTION DETECTOR	EEMAC (NEMA) STANDARD CONTROL PANEL: _____ LIMIT BOX: _____ REMOTE PUSH BUTTON ST'N: _____	LIMITATIONS:	AS SPECIFIED BY M & I DOOR SYSTEMS	
<input type="checkbox"/> GALV. SPRING END HOOD	<input type="checkbox"/> PHOTO CELL - CARLO GAVAZZI		DATE DR'N:	JUNE 13, 2003	FOR FRAMING DETAILS: F-2263-DR
<input type="checkbox"/> GALV. INTERIOR SPRING HOOD	<input type="checkbox"/> WIRELESS REMOTE		DR'N BY:	RUSS BOWMAN	REV. DATE: JUNE 11, 1998
<input type="checkbox"/> HIGH WINDLOAD PACKAGE	<input type="checkbox"/> REMOTE PUSH BUTTON ST'N		END USER:		SERIAL NO.:
	<input type="checkbox"/> AUTOMATIC CLOSE		DOOR SIZE:		DWG NO. S-2263-DR
	<input type="checkbox"/> FUSED DISCONNECT				



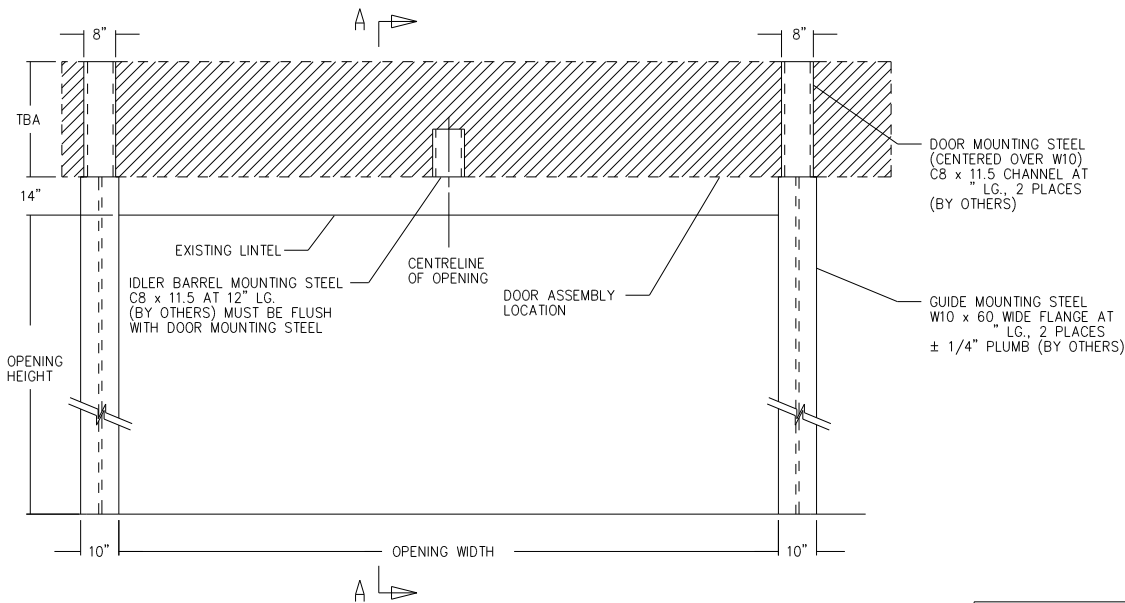
MOUNTING DOOR GUIDE
ON FRAMING STEEL



SPACE REQUIRED
FOR OPENING GUIDE



SECTION "A-A"



NOTES:

1. SHADED AREAS REPRESENT INSTALLATION CLEARANCES. REFER TO SHOP DRAWING FOR ACTUAL DIMENSIONS OF DOOR COMPONENTS.
2. ALL MOUNTING STEEL MUST BE SMOOTH.
3. GUIDE MOUNTING STEEL MUST PROTRUDE 8" ($\pm 1/16$ ") FROM DOOR AND IDLER BARREL MOUNTING STEEL.

5. MOUNTING STRUCTURE MUST BE ABLE TO WITHSTAND FORCES EXERTED BY DOOR. (DOOR WEIGHT APPROX. LBS.)
6. ADDITIONAL 2" CLEARANCE REQUIRED ABOVE AND ON EACH END OF DOOR ASSEMBLY FOR THE INSTALLATION OF HOODS, IF APPLICABLE.

M & I DOOR SYSTEMS LTD.			
TITLE		FRAMING DETAILS	
DOOR TYPE		RE-COIL-AWAY RIGHT-HAND	
FEATURES:		DOOR MNTD., TANDEN O.B.C.B.S. AND OPER, WALL MNTD. IDLER	
LIMITATIONS:		AS SPECIFIED BY M & I DOOR SYSTEMS	
DATE DRN:		APRIL 3, 1997	
DRN BY:		ROB O'NEILL	
END USER:		SERIAL NO.:	
DOOR SIZE:		DWG NO. F-2263-DR	