



# ULTRATOUGH M&I

The Ultimate in High Speed Rubber Doors

NEW

## ► TOUGH

The UltraTough M&I is built to withstand the harshest environments.

## ► SPEED

The UltraTough M&I opens at speeds up to 60" per second.

## ► WIRELESS SAFETY SYSTEM

Albany's patent pending Wireless Safety System eliminates costly repairs and downtime associated with coil cords.

## ► PANEL MATERIAL

Two layers of thick SBR and polyester fabric provides superb durability and has a lifetime warranty.

## ► CONTROLS

Albany's UltraSmart™ Controller is people friendly and extremely intuitive.

## ► WIND RESISTANT

Patented Windlok design enables the UltraTough M&I to resist winds of up to 135 mph.

## ► TRUCKGUARD SAFETY SYSTEM

Intelligent safety light system eliminates contact with objects in the doorway. (Optional)

## ► MAINTENANCE

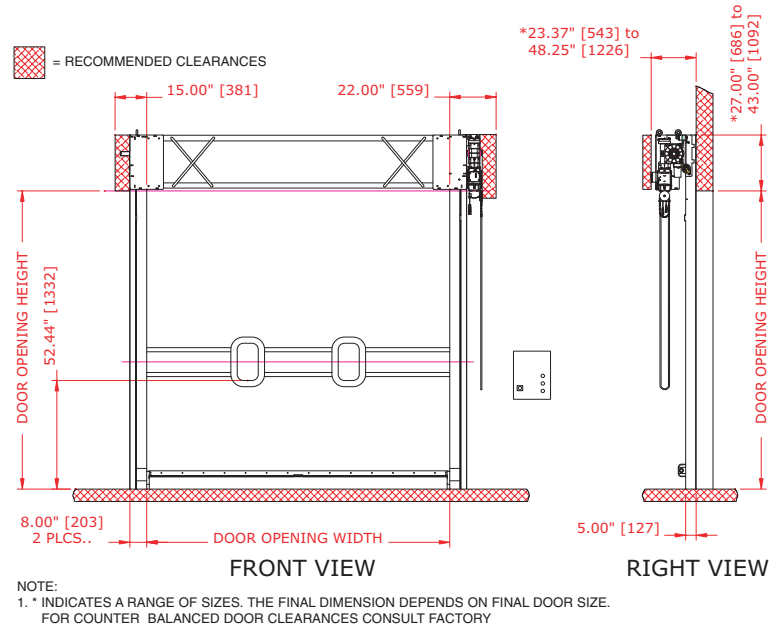
The UltraTough M&I is designed with a direct drive system that uses a minimum number of moving parts, decreasing maintenance costs and increasing door life.

Albany Door Systems' UltraTough M&I Re-Coil-Away, "The World's Toughest High Speed Rubber Door", provides dependable performance in the most rugged industrial applications. The heavy duty side frames, thick rubber curtain and patented windlok design form a near airtight seal and can resist wind pressures of up to 135 mph. The UltraTough M&I is designed to last. It is durable, safe, low cost to maintain and can take a hit.



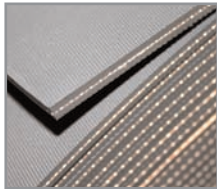
# ULTRATOUGH M&I

Albany's UltraTough M&I high speed rubber doors are fast, built to last, and engineered to cycle hundreds of thousands of times.



## Springless Design

Springless door design uses a direct drive system that eliminates the need for chains and sprockets, resulting in lower maintenance costs.



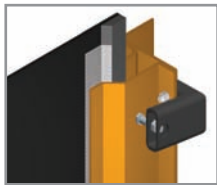
## UltraStrong Curtain

Warranted for the life of the door, the thick two layer SBR and high tensile strength polyester fabric provides superb resiliency in harsh environments.



## TruckGuard Safety System (Optional)

Intelligent safety light system eliminates contact with objects in the doorway. Mounted on the side guides, Albany's light system prevents activation due to curtain wind deflection.



## Patented Continuous Windlok Design

Albany's continuous windlok design produces near airtight seals and delivers more resiliency against damage, extreme weather and high windloads.



## Heavy Duty Construction

Heavy duty structural steel side columns and header. No aluminum.



## UltraSmart™ Controller

UltraSmart™ walks you through problems on the control screen. Modular components minimize cost and improve reliability.



## Wireless Safety System

Albany's patent pending Wireless Safety System eliminates costly repairs and downtime associated with coil cords.